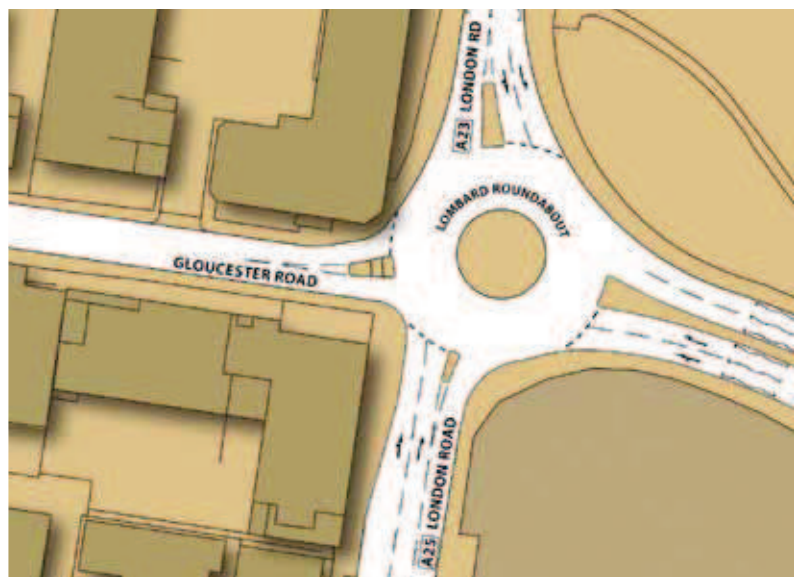
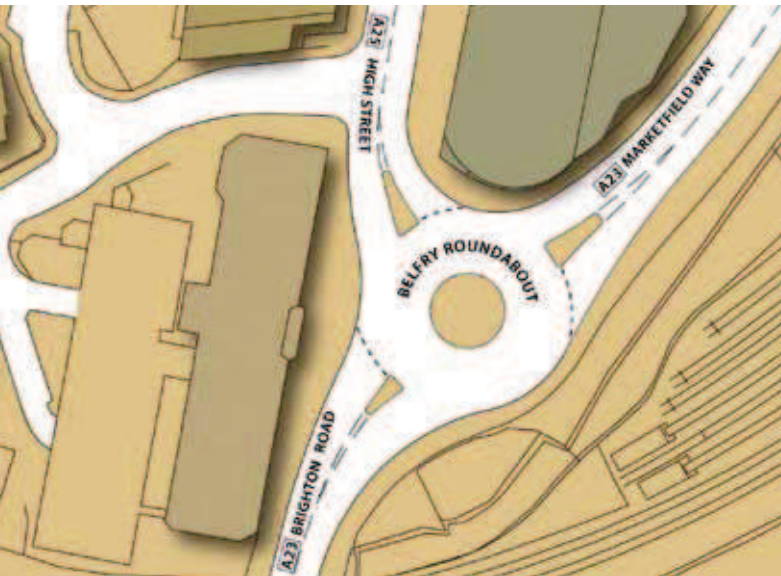


# Redhill town centre balanced network consultation (9 November 2012 - 4 January 2013)

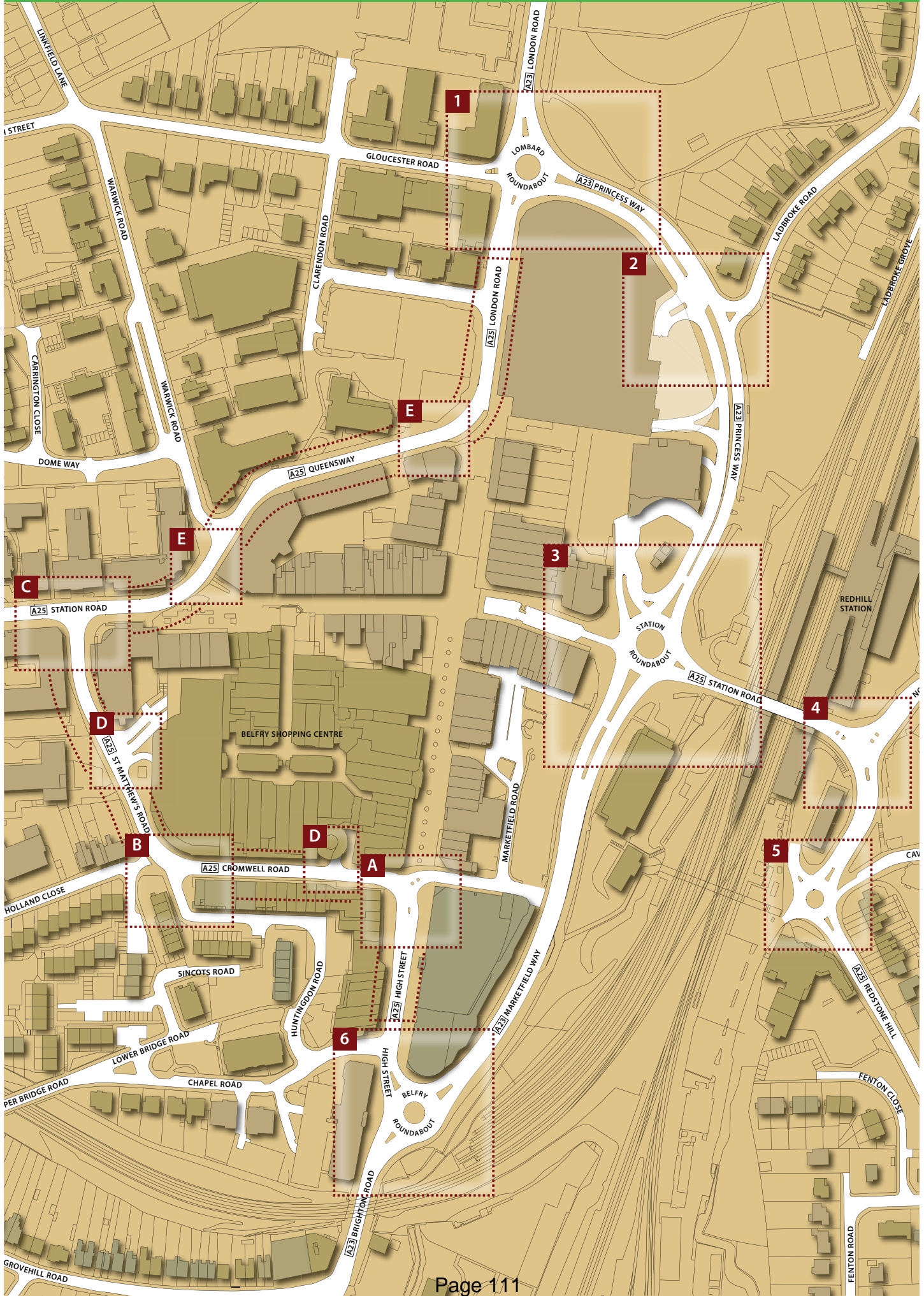
## Feedback form

Surrey County Council and Reigate & Banstead Borough Council would like to know what you think about the proposed highway improvements on the road network around Redhill town centre. The consultation period starts on Friday 9 November 2012 and runs for eight weeks. Please submit your responses by 5pm on Friday 4 January 2013. Your views will help us to finalise the details of the highways improvement scheme, including the proposed public open space treatment for Station Road.





# Proposed changes - overview plan











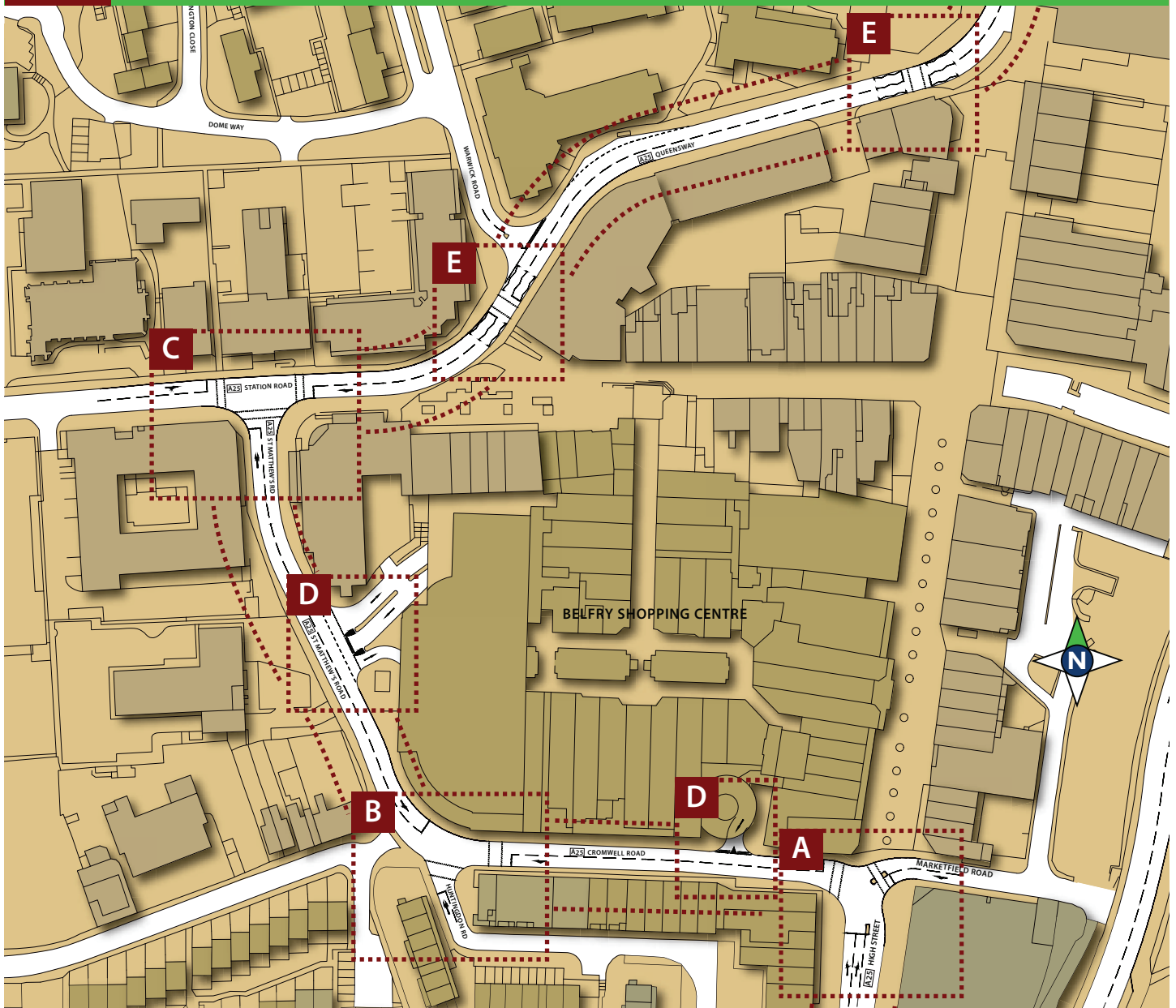








# A-E A25 town centre section (currently one-way northbound)



**Conversion of the existing one-way northbound part of the A25 consisting of Cromwell Road, St Matthew's Road, Station Road, Queensway and London Road to two-way working. The proposals include:**

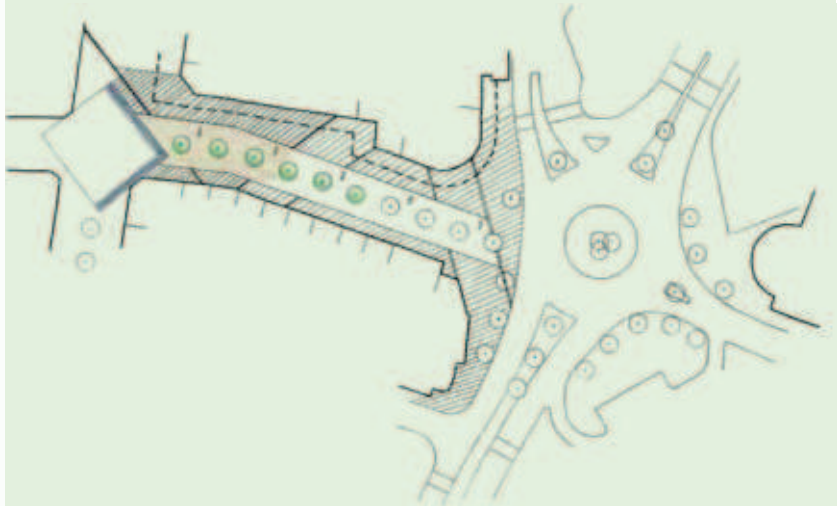
- Change of current one-way system between the Cromwell Road / High Street junction and the Lombard roundabout to two-way
- A - modification to the layout of the High Street junction with Cromwell Road. Remove existing pelican crossing and provide traffic signals with pedestrian/cyclist facilities (depending on whether Marketfield Road is closed or open)
- B - replacement of current priority arrangement with traffic signals (to cater for the potential ASDA or other development) at the Cromwell Road junction with Huntingdon Road
- Remove existing Pelican crossing across Cromwell Road and provide integrated Toucan crossings in the signal layout. Provide improved cycle facility at Holland Close. Minor kerb alterations where necessary
- C - modification of the layout of the Station Road junction with St Matthew's Road. Removal of existing triangular island and pelican crossing facilities. Provision of traffic signals with integrated pedestrian facilities. Minor kerb alterations where necessary
- D - changes to access arrangements at The Belfry Shopping Centre car park to allow for new road layout (subject to agreement with The Belfry)
- Minor road widening to the three corners located between the Station Road / St. Matthew's Road junction and the Lombard roundabout
- E - modification and relocation of pedestrian crossing signals at northern end of the High Street, adjacent to London Road
- conversion of existing pelican crossing by Warwick Road to Toucan crossing and modified to take two-way movements



# Option 1 - Pedestrianisation

## Design philosophy:

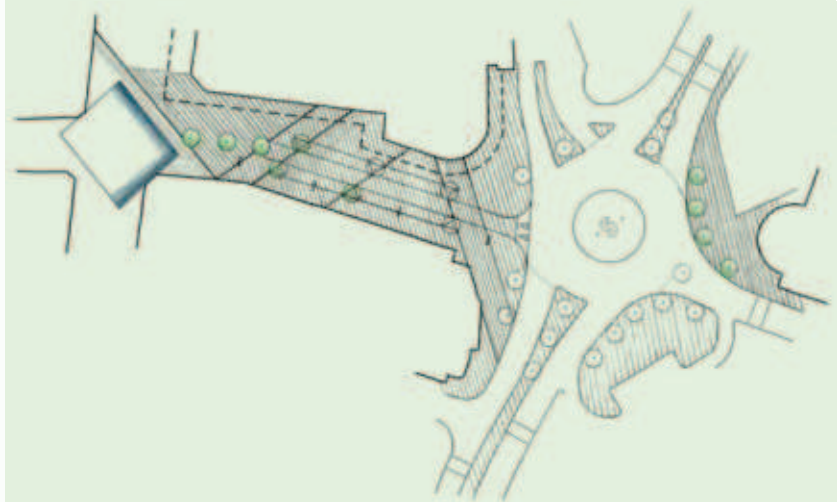
- Design replicates form of southern town centre arm
- Materials to match those currently on site
- Diagonal lines mimic both the southern and western arms
- Fully pedestrianised with potential loading access to the north if lighting was placed on the southern side
- Significant tree planting around the roundabout and along the main arm
- Trees spaced at 8 metres intervals
- Double lighting column proposed
- Paving design limited to western side of roundabout to reduce cost



# Option 2 - Public open space with carriageway delineation

## Design philosophy:

- Paving lines mimic those on the southern and western arms, whilst also relating to built form within this section
- Materials to match those currently on site
- Public open space with kerb line delineation, but no vehicular access to the west
- Disabled parking bays and loading bays integrated within the design
- Tree locations help delineate loading/parking bays
- Double lighting column proposed
- Paving design spreads across to the station to create a strong gateway entrance
- Potential inclusion of uplit artwork within the centre of the roundabout



# Option 3 - Public open space with no carriageway delineation

## Design philosophy:

- Design replicates the square but the colours are inverted to co-ordinate and provide a subtle difference
- Units sizes to match those currently on site
- Public open space proposal with no delineation of carriageway
- Capacity within design to incorporate parking if required
- Significant tree planting around the roundabout and along the main arm
- Trees spaced at 8 metres intervals
- Double lighting column proposed
- Water feature to create gateway but not block view of the town centre from the train station



## SUMMARY

The proposed highway improvements will generally:

- spread benefits to a wider range of travel modes
- provide journey time benefits for general traffic and bus services
- reduce congestion through the rationalisation of the network and an increase in route choices
- provide improvements for walking, cycling and public transport
- take into account the potential increase in traffic levels resulting from the development and regeneration of the town centre

The public open space proposals provide an opportunity to complete the pedestrianisation/ shared space of the town centre as well as providing a 'gateway' to the town centre from the bus and rail stations.

**We would be grateful if you could answer the following questions about yourself:**

**Q11 Are you responding in this questionnaire as an:**

- Individual    Business    Group

Postcode:

If you would like to be kept informed about future consultations in the Redhill area please provide your email address below:

Email:

**Q12 Which of the following groups best describes you?**

- Up to 14    40-49    80 or over  
 15-19    50-59    Prefer not to say  
 20-29    60-69  
 30-39    70-79

**Q13 Are your day to day activities limited because of health problems or disability which has lasted or is expected to last at least 12 months?**

- Yes, limited a lot    No  
 Yes, limited a little    Prefer not to say

**Q14 If yes, please indicate below?**

Please tick all that apply

- Deafness or severe hearing impairment
- Blindness or severe visual impairment
- A long standing psychological or emotional condition
- A condition that substantially limits one or more physical activities such as walking, climbing stairs, lifting or carrying
- Other (please specify)

**Q15 How do you normally travel in and around Redhill?**

- Foot
- Car
- Motorcycle
- Bicycle
- Bus
- Other (please specify)

**Q16 How often do you visit Redhill?**

- 5 or more times per week
- 2 to 4 times per week
- Once per week
- Less often

**Q17 What is your reason for visiting Redhill?**

- Shopping/leisure
- Resident
- Work
- Visiting friends or family

Please place your completed questionnaire in the replies box or drop it off at one of these locations:

- Consort House
- Harlequin Theatre on the days of the exhibition
- Reigate Town Hall

or complete online at [www.reigate-banstead.gov.uk](http://www.reigate-banstead.gov.uk) by 4 January 2013.

**Contact:**

[transport.consultations@surreycc.gov.uk](mailto:transport.consultations@surreycc.gov.uk) for further information.

Balanced network consultation

Surrey County Council

Consort House

5-7 Queens Way

Redhill

Surrey, RH1 1YB